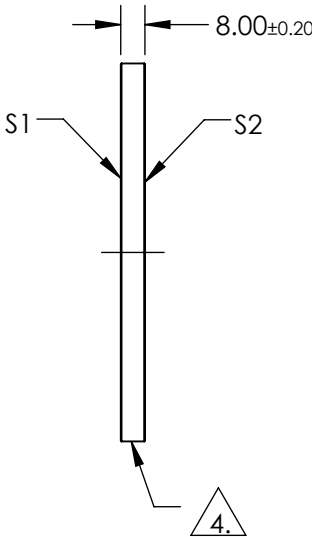
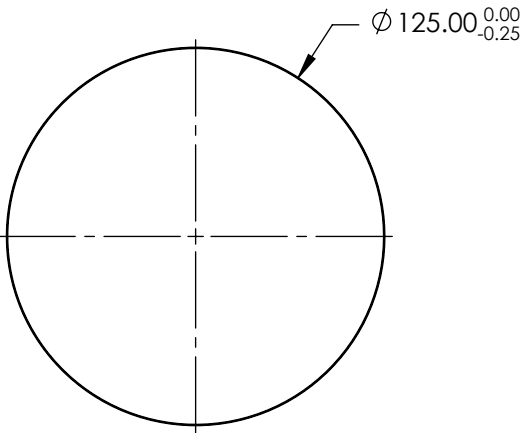
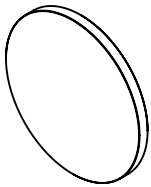


NOTES:

- 1. SUBSTRATE:
N-BK7
- 2. S2 TO BE PARALLEL TO S1 TO WITHIN <1 ARCMIN
- 3. COATING (APPLY ACROSS COATING APERTURE)
S1 & S2: NONE
- 4. FINE GRIND SURFACE
- 5. ROHS COMPLIANT
- 6. SURFACE FLATNESS (P-V): $\lambda/4$ (per inch over clear aperture)



**FOR INFORMATION ONLY:
DO NOT MANUFACTURE
PARTS TO THIS DRAWING**

SPECIFICATIONS SUBJECT TO CHANGE WITHOUT NOTICE
DIMENSIONS ARE FOR REFERENCE ONLY

	S1	S2
SHAPE	PLANO	PLANO
SURFACE QUALITY	60-40	60-40
WAVELENGTH RANGE	350 - 2200 nm	350 - 2200 nm
BEVEL	PROTECTIVE AS NEEDED	PROTECTIVE AS NEEDED

THIRD ANGLE PROJECTION

ALL DIMS IN mm

 **Edmund Optics®**

TITLE	125mm DIA., 8mm THICK, UNCOATED $\lambda/4$ N-BK7 WINDOW	
DWG NO	11857	SHEET 1 OF 1