
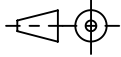
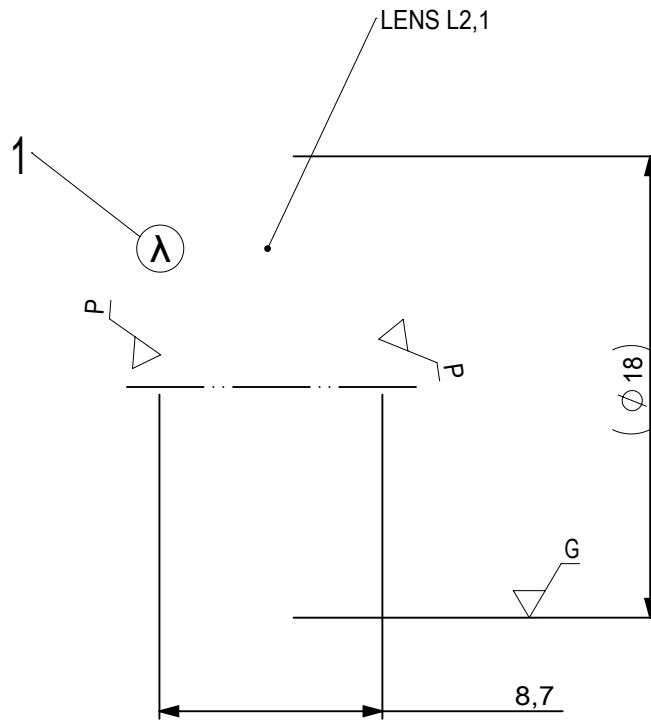


FOCAL LENGTH (EFL): $6 \pm 0,06$
 BACK FOCAL LENGTH (BFL): 4,6

1 BLACKENED SURFACE

SURFACE A	SURFACE B	SURFACE C
$\varnothing e 5,4$	$\varnothing e 5,4$	$\varnothing e$ Unused
CEMENT: NOA 61 OR EQUIVALENT		

PROTECTIVE CHAMFERS AS NEEDED		FIRST ANGLE PROJECTION				
ROHS: COMPLIANT	SCALE: NONE $\lambda = 587,6nm$					
SPECIFICATIONS SUBJECT TO CHANGE WITHOUT NOTICE. DIMENSIONS ARE FOR REFERENCE ONLY			TITLE	6,0mm Dia, x 6,0mm FL, VIS-NIR, Inked, Plano-Convex Lens		
FOR INFORMATION ONLY: DO NOT MANUFACTURE PARTS TO THIS DRAWING			ALL DIMS IN:	DWG NO	45465INK	SHEET SIZE
INDICATIONS IN ACCORDANCE WITH ISO 10110		mm			SHEET	1 OF 3



1 AR COATING: 0

LEFT SURFACE	MATERIAL	RIGHT SURFACE
R 4,71±0,005 CX Øe 5,4 3/ 3 (0,5) λ=632,8 nm 4/ - 5/ 40 - 20 (MIL-PRF-13830B) 6/ -	GLASS N-BaF10 670/472	R ∞ PL Øe 5,4 3/ 3 (0,5) λ=632,8 nm 4/ ##### 5/ 40 - 20 (MIL-PRF-13830B) 6/ -

PROTECTIVE CHAMFERS AS NEEDED

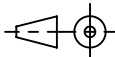
ROHS: COMPLIANT SCALE: NONE λ = 587,6nm

SPECIFICATIONS SUBJECT TO CHANGE WITHOUT NOTICE. DIMENSIONS ARE FOR REFERENCE ONLY

FOR INFORMATION ONLY: DO NOT MANUFACTURE PARTS TO THIS DRAWING

INDICATIONS IN ACCORDANCE WITH ISO 10110

FIRST ANGLE PROJECTION



ALL DIMS IN: mm



Edmund Optics®

TITLE

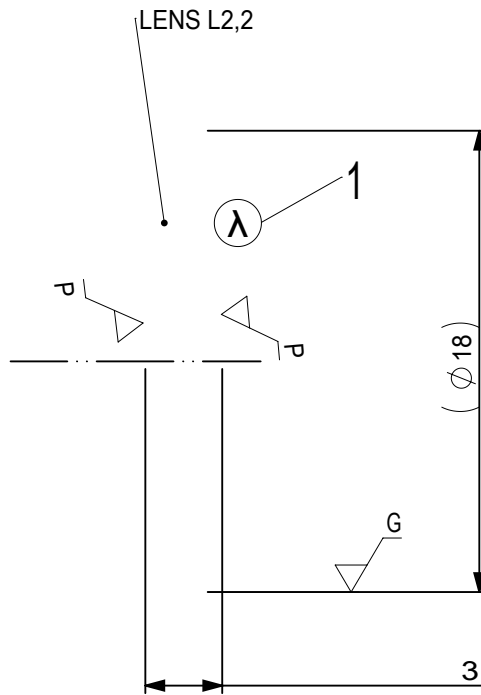
6,0mm Dia, x 6,0mm FL, VIS-NIR, Inked, Plano-Convex Lens

DWG NO

45465INK

SHEET SIZE
A4

SHEET
2 OF 3



1 AR COATING: 0

LEFT SURFACE	MATERIAL	RIGHT SURFACE
R ∞ Øe Unused 3/ UNUED (UNUED) λ=632,8 nm 4/ - 5/ Unused (MIL-PRF-13830B) 6/ -	GLASS N-SF57 847/238	R ∞ Øe Unused 3/ UNUED (UNUED) λ=632,8 nm 4/ - 5/ Unused (MIL-PRF-13830B) 6/ -

PROTECTIVE CHAMFERS AS NEEDED		FIRST ANGLE PROJECTION	Edmund Optics®		
ROHS: COMPLIANT	SCALE: NONE λ = 587,6nm				
SPECIFICATIONS SUBJECT TO CHANGE WITHOUT NOTICE. DIMENSIONS ARE FOR REFERENCE ONLY			TITLE	6,0mm Dia, x 6,0mm FL, VIS-NIR, Inked, Plano-Convex Lens	
FOR INFORMATION ONLY: DO NOT MANUFACTURE PARTS TO THIS DRAWING			ALL DIMS IN: mm	DWG NO	45465INK
INDICATIONS IN ACCORDANCE WITH ISO 10110					SHEET 3 OF 3