

NOTES:

1. SUBSTRATE:
SAPPHIRE (Al₂O₃)
2. SURFACE S2 TO BE PARALLEL WITH SURFACE S1 TO WITHIN < 3
3. COATING (APPLY ACROSS CLEAR APERTURE)

S1 & S2: NONE

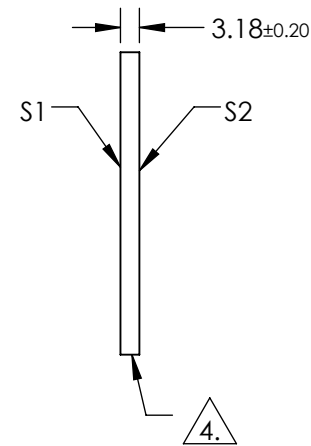
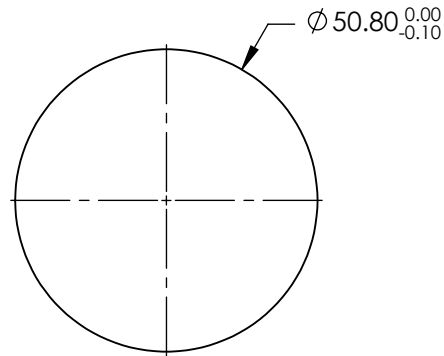


FINE GRIND SURFACE

5. TRANSMITTED WAVEFRONT DISTORTION:
≤λ/10 OVER 25.4mm OF CLEAR APERTURE

6. ROHS COMPLIANT

**FOR INFORMATION ONLY:
DO NOT MANUFACTURE
PARTS TO THIS DRAWING**




SPECIFICATIONS SUBJECT TO CHANGE WITHOUT NOTICE
DIMENSIONS ARE FOR REFERENCE ONLY

	S1	S2
SHAPE	PLANO	PLANO
CLEAR APERTURE	Ø45.00	Ø45.00
SURFACE QUALITY	10-5	10-5
BIREFRINGENCE (n _o -n _e)	0.000	0.000
AXIS ORIENTATION	C-AXIS	C-AXIS
BEVEL	PROTECTIVE AS NEEDED	PROTECTIVE AS NEEDED



ALL DIMS IN mm

 Edmund Optics®		50.8mm DIA., 3.18mm THICK, UNCOATED, LASER GRADE C-AXIS SAPPHIRE WINDOW	
		TITLE	
DWG NO	15805	SHEET	1 OF 1