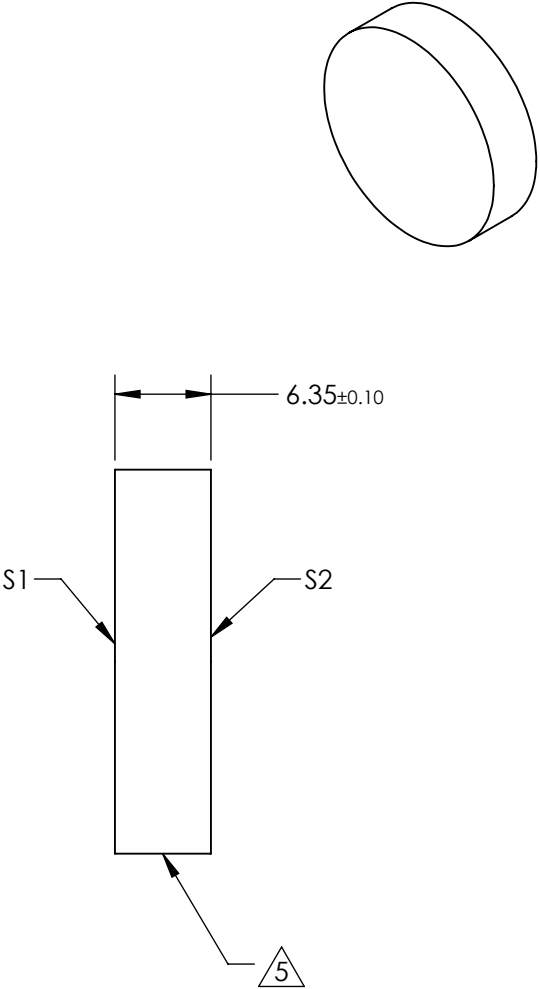
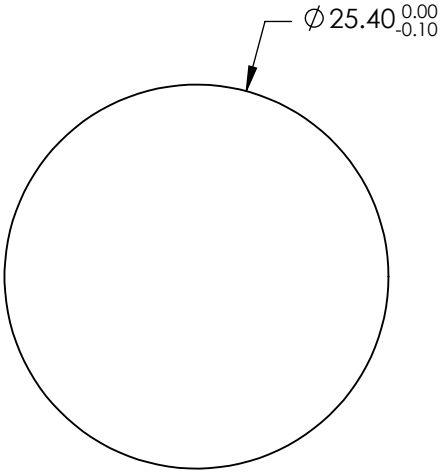


NOTES:

1. SUBSTRATE MATERIAL:
FUSED SILICA
2. SURFACE S2 TO BE PARALLEL TO SURFACE S1 TO WITHIN <3 ARCMIN
3. COATING (APPLY ACROSS CLEAR APERTURE)
S1: DIELECTRIC
Rs>99.9% @385-415nm
Rp>99.8% @395-415nm
Rs>99.9% @770-830nm
Rp>99.9% @770-820nm
- S2: STRESS-COMPENSATING
- GROUP DELAY DISPERSION
<35fs2 @ 385 - 415nm (s-pol)
<50fs2 @ 395 - 415nm (p-pol)
<20fs2 @ 770 - 830nm (s-pol)
<40fs2 @ 770 - 810nm (p-pol)


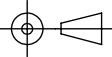
4. FINE GRIND SURFACE

5. ROHS COMPLIANT



**FOR INFORMATION ONLY:
DO NOT MANUFACTURE
PARTS TO THIS DRAWING**

SPECIFICATIONS SUBJECT TO CHANGE WITHOUT NOTICE
DIMENSIONS ARE FOR REFERENCE ONLY

	S1	S2	 Edmund Optics®			
SHAPE	PLANO	PLANO				
SURFACE FLATNESS	$\lambda/6$	N/A				
SURFACE QUALITY	10 - 5	COMMERCIAL POLISH				
CLEAR APERTURE	$\phi 22.35$	N/A	TITLE			
BEVEL	PROTECTED AS NEEDED	PROTECTED AS NEEDED				
			ALL DIMS IN	mm	DWG NO	24322
					400, 800nm, 25.4mm Dia., Ultrafast Dual Band Mirror	
					SHEET 2 OF 3	