

NOTES:

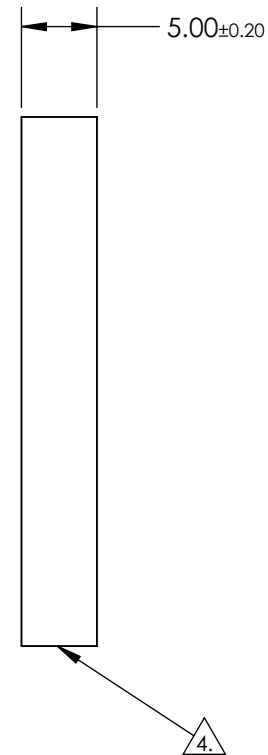
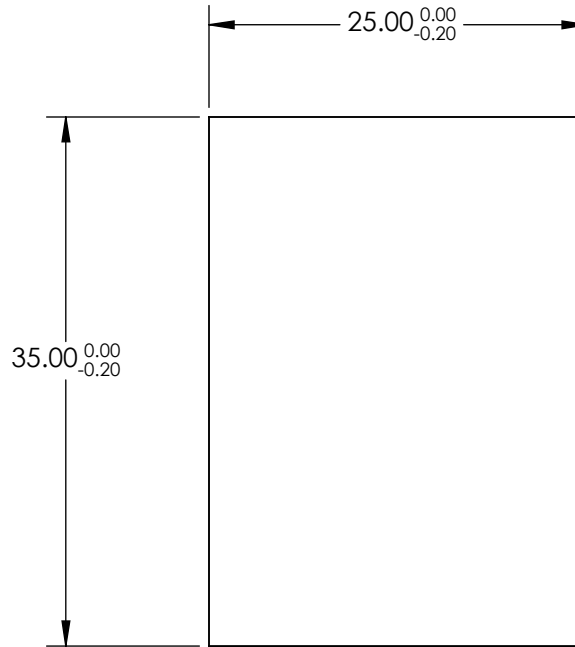
1. SUBSTRATE MATERIAL: Fused Silica
2. SURFACE S2 TO BE PARALLEL TO S1 TO <30 arcsec
3. COATING (APPLY ACROSS CLEAR APERTURE)

S1: Protected Silver (450-10000nm)  
 R(AVG) >98% @ 450 - 2000nm  
 R(AVG) >98% @ 2000 - 10,000nm

S2: NONE

4. FINE GRIND SURFACE

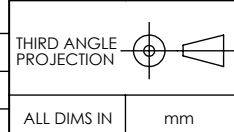
5. RoHS COMPLIANT



**FOR INFORMATION ONLY:  
 DO NOT MANUFACTURE  
 PARTS TO THIS DRAWING**

SPECIFICATIONS SUBJECT TO CHANGE WITHOUT NOTICE  
 DIMENSIONS ARE FOR REFERENCE ONLY

	S1	S2
SHAPE	PLANO	PLANO
SURFACE QUALITY	20 - 10	COMMERCIAL POLISH
SURFACE FLATNESS	$\lambda/10$	N/A
CLEAR APERTURE	22.50 X 31.50	N/A
BEVEL	PROTECTED AS NEEDED	PROTECTED AS NEEDED



 <b>Edmund Optics®</b>	
TITLE	25 x 35mm Protected Silver Coated, $\lambda/10$ Mirror
DWG NO	25549
SHEET 1 OF 1	