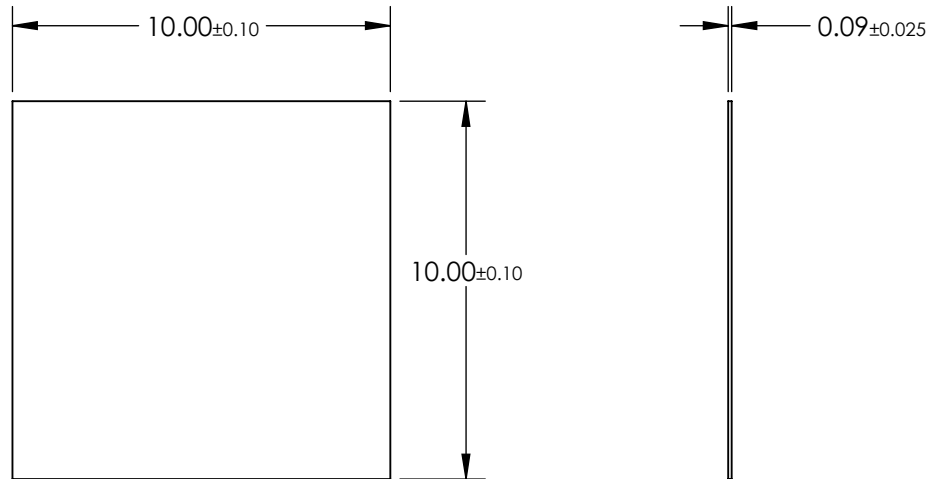
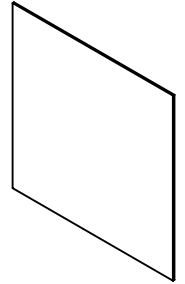


NOTES:

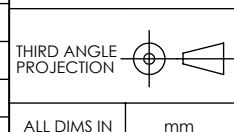
1. SUBSTRATE: SODIUM SILICATE GLASS DOPED WITH SILVER NANOPARTICLES
2. COATING: Double-Side AR
3. TYPICAL ENERGY DENSITY LIMIT: 10 W/cm<sup>2</sup>
4. EXTINCTION RATIO: >10,000:1
5. WAVELENGTH RANGE: 1500-1600
6. ROHS COMPLIANT



**FOR INFORMATION ONLY:  
DO NOT MANUFACTURE  
PARTS TO THIS DRAWING**

SPECIFICATIONS SUBJECT TO CHANGE WITHOUT NOTICE  
DIMENSIONS ARE FOR REFERENCE ONLY

	S1	S2
SHAPE	PLANO	PLANO
SURFACE QUALITY	40 - 20	40 - 20
TRANSMISSION (%)	>96	>96
ACCEPTANCE ANGLE	±20°	±20°
BEVEL MAX FACE	PROTECTED AS NEEDED	PROTECTED AS NEEDED



**EO**® **Edmund Optics**®

TITLE	Ultra-Thin Polarizer, 1550nm, 10 x 10mm, AR		
DWG NO	26653	SHEET	6 OF 6

ALL DIMS IN mm