

NOTES:

1. SUBSTRATE:  
FUSED SILICA

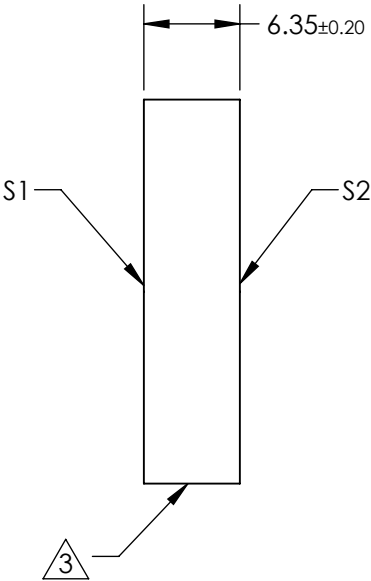
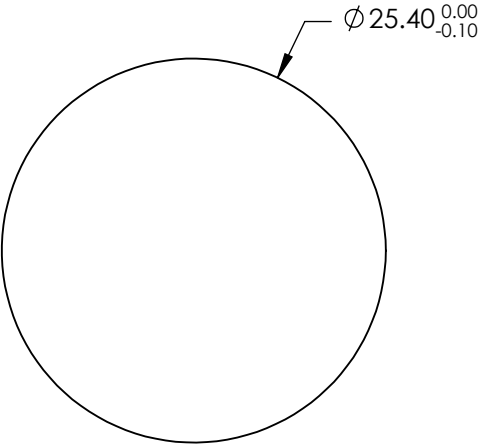
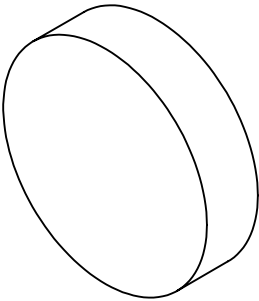
2. COATING (APPLY ACROSS CLEAR APERTURE)  
S1: Ultrafast (1900-2000nm)  
R(AVG) S&P > 99.90% @ 2000nm  
R(AVG)> 99.7% @ 1900 – 2100nm

GDD SPECIFICATION:  $\pm 20 \text{ fs}^2$ @ 1900 - 2100nm @ 45° AOI

S2: NONE

3. FINE GRIND SURFACE

4. ROHS COMPLIANT



**FOR INFORMATION ONLY:  
DO NOT MANUFACTURE  
PARTS TO THIS DRAWING**

SPECIFICATIONS SUBJECT TO CHANGE WITHOUT NOTICE  
DIMENSIONS ARE FOR REFERENCE ONLY

	S1	S2
SHAPE	PLANO	PLANO
SURFACE QUALITY	10 - 5	COMMERCIAL POLISH
CLEAR APERTURE	Ø 22.86	N/A
SURFACE FLATNESS	λ/8	N/A
BEVEL	PROTECTED AS NEEDED	PROTECTED AS NEEDED

THIRD ANGLE  
PROJECTION

ALL DIMS IN      mm

 **Edmund Optics®**

TITLE	Low-GDD Ultrafast Dielectric Mirror, 2000nm, 45° AOI, 25.4mm Dia., 6.35mm Thick		
DWG NO	26845	SHEET 23 OF 24	