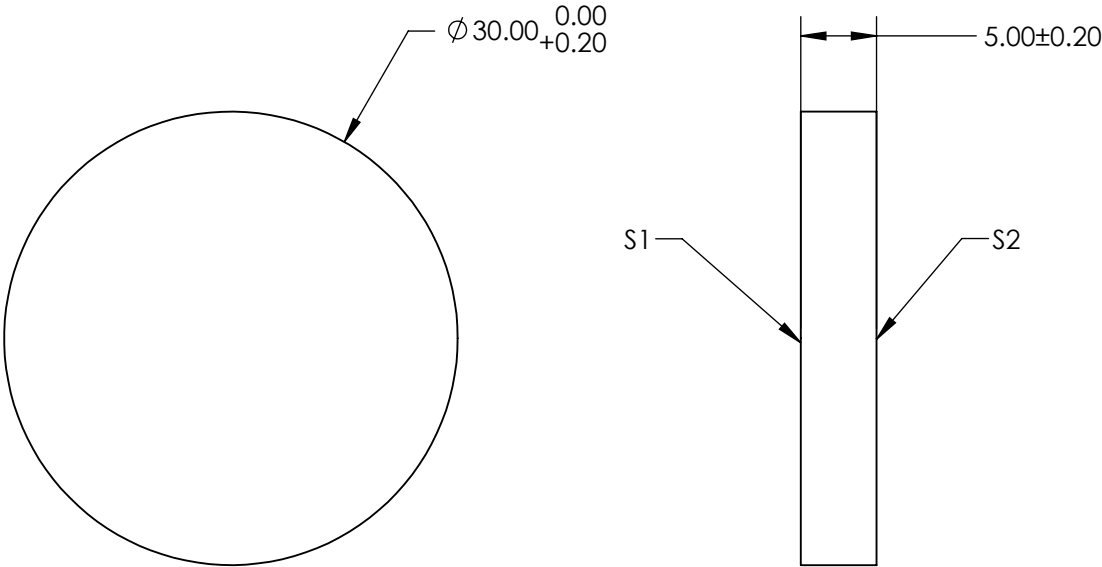
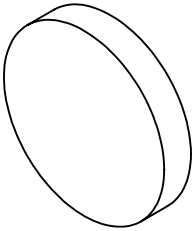


NOTES:


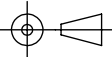
- 1. SUBSTRATE:
FUSED SILICA
- 2. PARALLELISM: 30 ARCSEC
- 3. COATING (APPLY ACROSS CLEAR APERTURE)

S1: UV Enhanced Aluminum (250-700nm)
R(avg) >85% @ 250 - 700nm
R(avg) >89% @ 250 - 450nm
S2: NONE
- 4. POWER, IRREGULARITY, AND SURFACE QUALITY SPECIFICATIONS
APPLY ACROSS CLEAR APERTURE
- 5. ROHS COMPLIANT



**FOR INFORMATION ONLY:
DO NOT MANUFACTURE
PARTS TO THIS DRAWING**

SPECIFICATIONS SUBJECT TO CHANGE WITHOUT NOTICE
DIMENSIONS ARE FOR REFERENCE ONLY

	S1	S2	 Edmund Optics®			
SHAPE	PLANO	PLANO		TITLE	30mm Dia UV Enhanced Aluminum, $\lambda/20$ Mirror	
SURFACE QUALITY	20 - 10	COMMERICAL POLISH		DWG NO	70293	SHEET 5 OF 8
SURFACE FLATNESS	$\lambda/20$ (PRE-COATING)	N/A				
BEVEL	PROTECTED AS NEEDED	PROTECTED AS NEEDED	ALL DIMS IN mm			