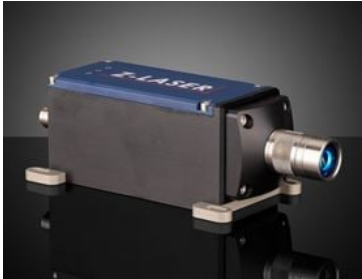


[All Products](#) / [Lasers](#) / [Laser Sources](#) / [Machine Vision Lasers](#)

Z-Laser ZQ1 High Power Machine Vision Laser Diode Modules



- Homogenous Intensity Distribution Lines with High Output Powers up to 1700mW
- Shock and Vibration Resistant, IP67 Rated Design
- 450, 660, and 808nm Wavelengths with 30 or 45° Fan Angles



Common Specifications

General				
Laser Class - IEC:		3B	Type of Laser:	Diode
Laser Class - CDRH:		IIIb		
Physical & Mechanical Properties				
Dimensions (inches):		6.26 x 2.57 x 2.03 (L x W x H)		
Weight (g):		690	Diameter of Laser Head (inches):	0.79
Optical Properties				
Focus Range (mm):		100mm up to 10,000mm		
Electrical				
Modulation Frequency (kHz):		200		
Hardware & Interface Connectivity				
Output Type:		Free Space	Connector:	5 Pins, M12
Input Voltage (V):		12 - 24		
Environmental & Durability Factors				
Operating Temperature (°C):		-10 to +50		
Storage Temperature (°C):		-40 to +85		

Technical Information

Products

Wavelength (nm)	Output Power (mW)	Fan Angle (°)	Style	Stock Number	Price	Buy
450.00	1000	45.00	Homogeneous Line	#19-438	C\$7,972.02 Volume Pricing	1 In Stock
450.00	1300	45.00	Homogeneous Line	#19-439	C\$7,972.02 Volume Pricing	1 In Stock
660.00	800	30.00	Homogeneous Line	#19-440	C\$7,163.94 Volume Pricing	1 In Stock
660.00	1000	45.00	Homogeneous Line	#19-441	C\$7,163.94 Volume Pricing	1 In Stock
808.00	1700	30.00	Homogeneous Line	#19-442	C\$7,319.34 Volume Pricing	1 In Stock

[#19-442-RCD-03N Recertified](#)



Recertified

Stock No.: 19-442-RCD-03N
Recertified Code: 03N (Missing Manual
and Small Accessory, Minor
Defect/Scratches)

Recertified
Products

*Typically 1-2 Recertified Products are in
stock at a time. Please contact our sales
team if you would like exact availability of
an item.*

Recertified products are those identified
with the recertified logo indicating they
were returned to Edmund Optics® and
cannot be sold as new for the following
reasons:

- Open Box – Missing original
packaging
- Cosmetic Blemishes – Scratches,
rub marks or other minor cosmetic
imperfections
- Service/Repair – Product has been
serviced to the factory original
specification
- Factory Returns – Product has been
returned in its original condition

808.00	1700	30.00	Homogeneous Line	Recertified products are inspected for damage and any necessary repairs are made. Products are then certified by Edmund Optics® to be in good working order. Since quantity is low, recertified products are sold on a first come, first serve basis. Any imperfections will be listed in the description, indicated in the stock number, and categorized by the	C\$4,690.29	1 In Stock
--------	------	-------	---------------------	--	-------------	------------

table below. When purchasing recertified products, the Edmund Optics® standard [return policy](#) applies.

View all our [recertified products](#) in the Web Specials section of our website.

	Parts		Cosmetic
05	All Original Parts Included	P	Perfect
04	Missing Manual	N	Minor Defect/Scratches
03	Missing Manual and Small Accessory	J	Major Defect/Scratches
02	Missing Manual and Large Accessory		



Copyright 2023, Edmund Optics Inc., 101 East Gloucester Pike, Barrington, NJ 08007-1380 USA
Phone: 1-800-363-1992 :
www.edmundoptics.com